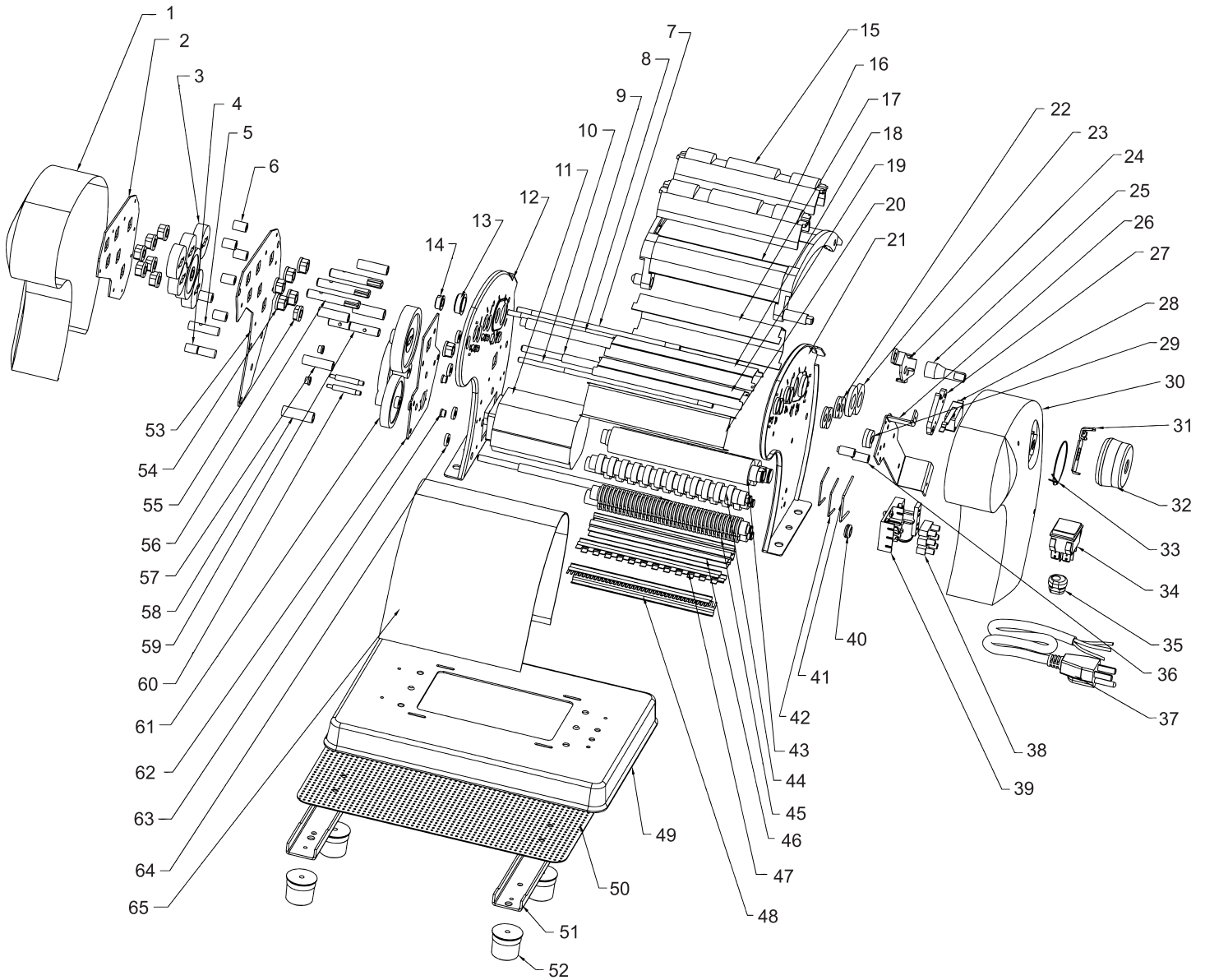


Parts Breakdown

Model PM-CN-0150 44520



Parts Breakdown

Model PM-CN-0150 44520

Item No.	Description	Position	Item No.	Description	Position	Item No.	Description	Position
AI993	Right Cover for 44520	1	AJ015	Roller Gear (2pc) for 44520	23	AJ037	Cutter Chief Axis (2), Cutter Auxiliary (2) for 44520	45
AI994	Gear Rack I, Screw (6pc), Spring Pad (6pc), Flat Pad (6pc) for 44520	2	AJ016	Adjusting Bracket, Nut (2pc), Wedge (21pc) for 44520	24	AJ038	150 Scraping Knife (2pc) for 44520	46
AI995	One Stage Transmission Gear, Two Stage Transmission Gear, Three Stage Transmission Gear (4pc) for 44520	3	AJ017	Eccentric Shaft for 44520	25	AJ039	Combs 6 (2pc) for 44520	47
AI996	Gear Shaft II, Steering Ring (1pc) for 44520	4	AJ018	Left Cover Frame, Screw (2pc), Grooved Metal Gasket (2pc) for 44520	26	AJ040	Combs 2 (2pc) for 44520	48
AI997	Gear Shaft I, Cylindrical Pin (1pc) for 44520	5	AJ019	Switch Frame, Tapping Screw with Pad (2pc) for 44520	27	AJ041	Lampstand for 44520	49
AI998	Shore III (6pc) for 44520	6	AJ020	Touch Switch, Tapping Screw (2pc) for 44520	28	AJ042	Breathable Sheet for 44520	50
AI999	Binding Bolt M5 (2pc) for 44520	7	AJ021	Switch for 44520	29	AJ043	Bottom Board (2pc), Self Tapping Screw (4pc) for 44520	51
AJ000	Eccentric Shaft for 44520	8	AJ022	Left Cover, Tapping Screw (2pc) for 44520	30	AJ044	Straw (4pc), Self Tapping Screw (4pc) for 44520	52
AJ001	M6 Long Double Threaded Screw (2pc) for 44520	9	AJ023	Adjusting Plate for 44520	31	AJ045	Gear Rack II, Nut (3pc), Screw (2pc), Spring Pad (5pc), Flat Pad (5pc) for 44520	53
AJ002	M5 Long Double Threaded Screw for 44520	10	AJ024	Adjusting Handle, Screw (1pc) for 44520	32	AJ046	Inserts (11pc) for 44520	54
AJ003	Electric Motor, Screw (6pc), Spring Pad (4pc) for 44520	11	AJ025	Round Spring for 44520	33	AJ047	Short Sleeve for 44520	55
AJ004	Right Bracket for 44520	12	AJ026	Button Switch (Four Second) for 44520	34	AJ048	Gear Shaft III (3pc), Cylindrical Pin (3pc) for 44520	56
AJ005	Axle Sleeve (2pc) for 44520	13	AJ027	Power Line Deduction (6N-4) for 44520	35	AJ049	Shore I (3pc) for 44520	57
AJ006	Eccentric Bushing for 44520	14	AJ028	Screw Hole Pillar (2pc) for 44520	36	AJ050	Shore II (2pc) for 44520	58
AJ007	Surface Cover (2pc) for 44520	15	AJ029	Power Line for 44520	37	AJ051	Layer of Output Shaft, Cylindrical Pin (2pc), Adjusting Wedge for 44520	59
AJ008	Cover of Forearm, Cover of Rear Arm, Cover of Left Arm, Cover of Right Arm, Screw (4pc) for 44520	16	AJ030	Wiring Terminal, Connecting Line I, Connecting Line II, Connecting Line III, Tapping Screw (2pc) for 44520	38	AJ052	Dowel (2pc), Distance Piece for 44520	60
AJ009	Front Baffle for 44520	17	AJ031	Wire Holder, Screw (2pc) for 44520	39	AJ053	Output Gear, Mid Gear, Helical Gear for 44520	61
AJ010	Mid Baffle for 44520	18	AJ032	Rubber Sleeve for 44520	40	AJ054	Gear Rack III, Screw (5pc), Spring Pad (5pc) for 44520	62
AJ011	Small Intermediate Baffle for 44520	19	AJ033	Roller Spring Clip (2pc) for 44520	41	AJ055	Fixed Plate Set (4pc) for 44520	63
AJ012	Back Baffle for 44520	20	AJ034	Cutter Spring Clip (2pc) for 44520	42	AJ056	Damping Pad (5pc) for 44520	64
AJ013	Left Bracket for 44520	21	AJ035	Roller Chief Axis, Roller Auxiliary Axis, Bulkhead for 44520	43	AJ057	Motor Cover for 44520	65
AJ014	Cutter Gear (4pc), Axial Ring File (4pc) for 44520	22	AJ036	Cutter Chief Axis (6), Cutter Auxiliary (6) for 44520	44			